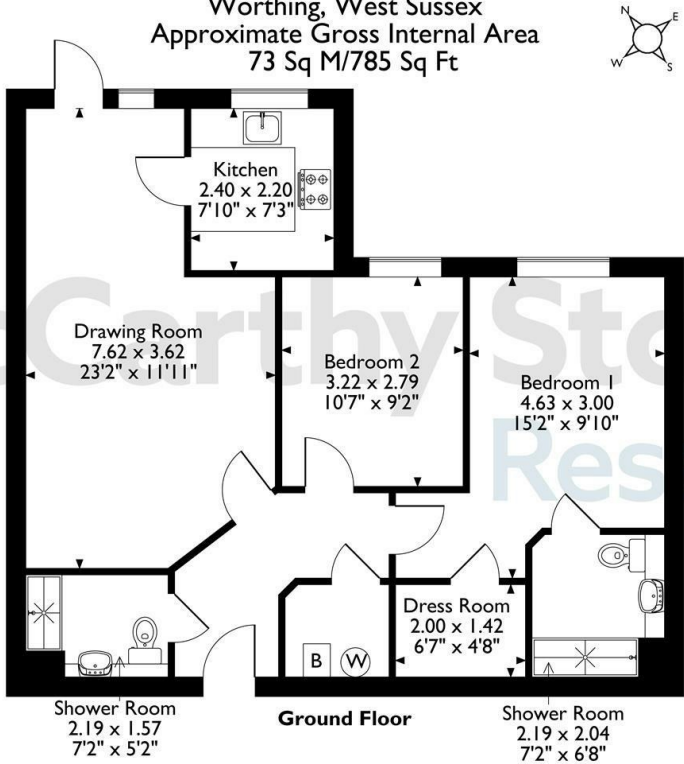


6 Walnut Tree Place, 2, Goring Street, Goring-by-Sea,  
Worthing, West Sussex  
Approximate Gross Internal Area  
73 Sq M/785 Sq Ft



The position & size of doors, windows, appliances and other features are approximate only.  
© ehouse. Unauthorised reproduction prohibited. Drawing ref. dig/8651728/DST.

Council Tax Band:



Energy Efficiency Rating		
	Current	Potential
Very energy efficient - lower running costs		
(92 plus) A		
(81-91) B		
(69-80) C		
(55-68) D		
(39-54) E		
(21-38) F		
(1-20) G		
Not energy efficient - higher running costs		
England & Wales	EU Directive 2002/91/EC	

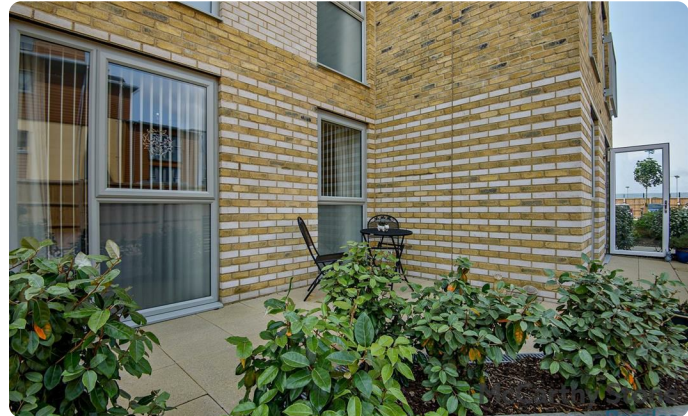
This floor plan is not drawn to scale and is for illustrative purposes only. Any measurements, floor areas (including any total floor area), openings and orientation are approximate and for guidance only. McCarthy Stone Resales do not take liability for any error, omission or misstatement. All parties must rely on their own inspections. It should not be assumed that any furniture or fittings contained in the photographs are included in any sale. All details referring to time and distances to localities are approximate. Details regarding any common charges and other applicable fees are provided by the seller and should not be relied on without verification and further checks made through a solicitor/conveyancer. Please contact the Property Consultant for further information that Appliances (including central heating) have not been tested, therefore it cannot be assumed that they are in good working order. All interested parties are advised to check availability and make an appointment before travelling to view the property to avoid disappointment or wasted time or travel expenses. The details contained within this brochure are for information purposes only and do not form part of any agreement. All purchases will be subject to contract terms. © All artwork (photos and floorplans) and written content are the sole property and copyright of McCarthy & Stone Resales Limited and are legally protected by UK & International copyright laws. Under no circumstance may you download, reproduce, publish or distribute any content for commercial purposes, without prior written permission from McCarthy Stone Resales. Unauthorised duplication or usage for commercial purposes is prohibited by the Copyright law and will be prosecuted.



## 6 Walnut Tree Place

Goring Street, Goring-By-Sea, BN12 6NT

PRICE  
REDUCED



PRICE REDUCTION

Asking price £349,000 Leasehold

\*Come along to our Open Day - Saturday 7th February 2026 - from 11am to 3pm - BOOK YOUR PLACE TODAY!\*

A SUPERB and SPACIOUS apartment boasting TWO BEDROOMS and TWO SHOWER ROOMS. Superbly positioned on the GROUND FLOOR with direct PATIO ACCESS from the living dining room.

Walnut Tree Place is a McCarthy Stone Retirement Living development for the over 60's and boasts excellent COMMUNAL FACILITIES, to include; a communal lounge where SOCIAL EVENTS take place, LOVELY LANDSCAPED GARDENS and a GUEST SUITE for visiting family and friends.

Call us on 0345 556 4104 to find out more.



# Walnut Tree Place, Goring Street, Goring-

# 2 Bed | £349,000

PRICE  
REDUCED

### Development Overview

Walnut Tree Place is a Retirement Living development in Goring-by-Sea, offering 17 one bedroom and 18 two bedroom retirement apartments exclusive to the over 60s.

The fantastic communal facilities include a Homeowners lounge where social events take place, and lovely landscaped gardens with communal patio seating area. If your visitors have come from afar, there is a guest suite for them to stay in (subject to availability - additional charges apply). In addition, there is a lift to all floors and a mobility scooter store with charging points.

There is a dedicated House Manager on site during office hours, and the development links through to the 24 hour emergency call system for when they are off duty. The door entry system ensures complete peace of mind and the 24 hour emergency call system is provided by a personal pendant with a call point in the shower rooms.

The development is perfectly located just over a mile from the seafront, with a convenience store nearby and excellent transport links via rail to London and Gatwick Airport should the holiday mood take you.

It is a condition of purchase that all Residents must be over the age of 60 years.



### Entrance Hallway

Front door with spy hole leads to the large entrance hall, where the 24 hour emergency response pull cord system is in place. Illuminated light switches and smoke detector. From the hallway there is a door to a walk-in storage and airing cupboard/utility room (housing boiler and washing machine). All other doors lead to the both bedrooms, living room and shower room.

### Living Room (with patio area off)

A spacious and well presented living/dining room boasting a glazed door opening onto a lovely patio seating area. Two ceiling light points, power points, TV & telephone points. Door leads onto a separate kitchen.

### Kitchen

Fitted kitchen boasting modern wall and base units with complimentary work surfaces over. Stainless steel sink with chrome mixer tap and drainer unit sits below the window. There is an integrated fridge/freezer and a fitted electric oven. There is also a fitted electric ceramic hob with extractor hood. Contemporary ceiling lights and wood effect flooring.

### Bedroom One

A spacious double bedroom with a very useful walk-in wardrobe, housing hanging rails and shelving. Floor to ceiling window, raised power points, TV and BT points. Door to en-suite shower room.

### En-Suite Shower Room

A contemporary shower room boasting walk-in



shower with glass screen and grab rail, WC and vanity unit with wash hand basin inset. Emergency pull cord, extensive tiling to walls and tiled floor.

### Bedroom Two

A second double bedroom which could alternatively be used as a dining room, hobby room or office. Floor to ceiling window, power points and light fitting.

### Shower Room

Accessed via the entrance hallway, this second shower room comprises of; shower cubicle with glass screen and grab rail, WC and vanity unit with wash hand basin inset. Emergency pull cord, extensive tiling to walls and tiled floor.

### Service Charge (breakdown)

- Cleaning of communal windows
- Water rates for communal areas and apartments
- Electricity, heating, lighting and power to communal areas
- 24 hour emergency call system
- Upkeep of gardens and grounds
- Repairs and maintenance to the interior and exterior communal areas
- Contingency fund including internal and external redecoration of communal areas
- Buildings insurance

Service charge £5,869.69 until 31/08/2026, the service charge does not cover external costs such as your Council Tax, electricity or TV. To find out more about service charges please contact your Property Consultant or House Manager.

### Lease Information

Lease: 999 years from 1 Jan 2024.  
No Ground rent

### Additional Information & Services

- Full Fibre Broadband available
- Mains water and electricity
- Electric room heating
- Mains drainage

